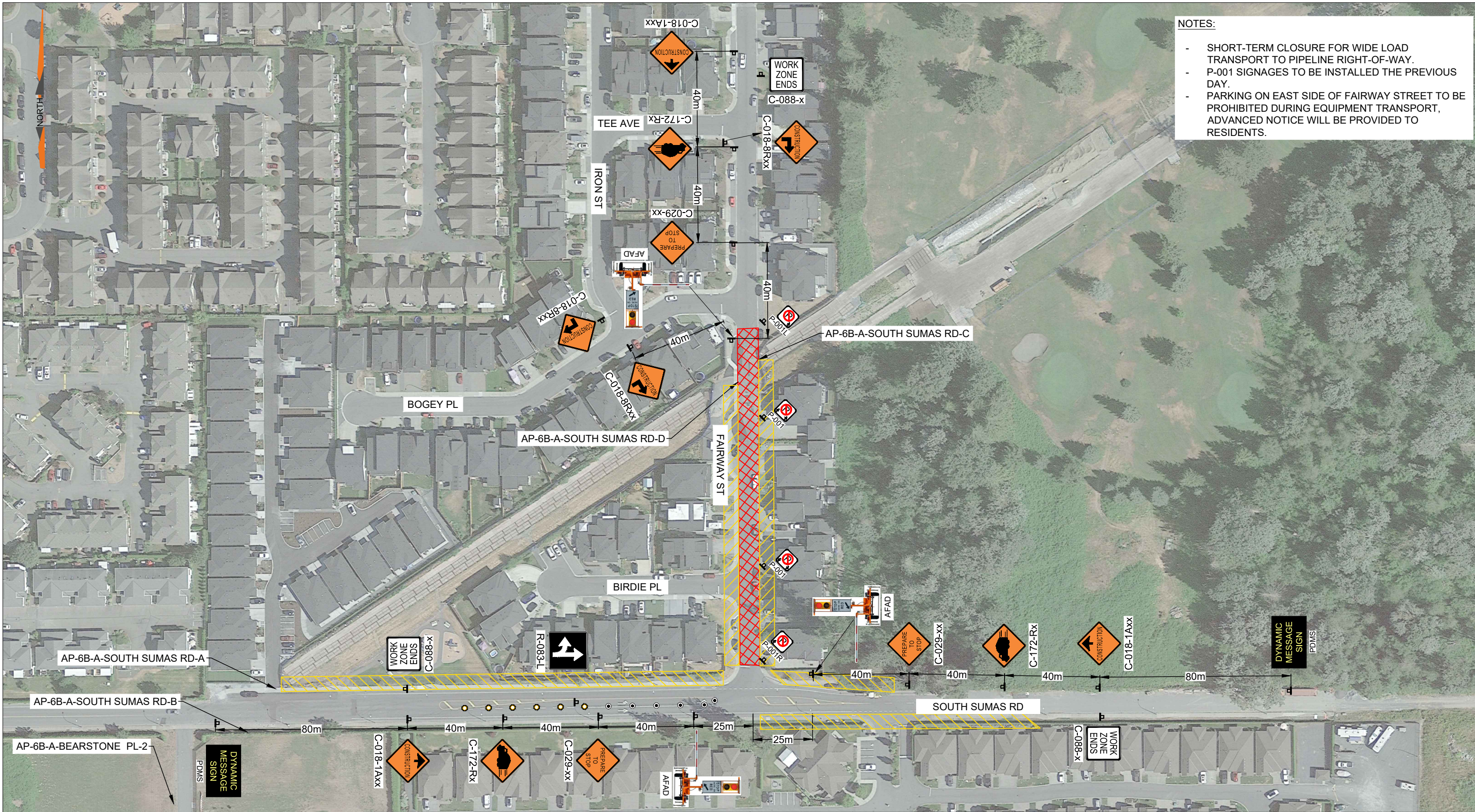


PROJECT: V:\Project Files\3431 - TMEP Spread 6B - Design\AFAD SOUTH SUMAS & FAIRWAY CLOSURE\_R1\_2023-08-02.dwg  
PLOT DATE: 8/2/2023 2:38 PM  
PLOT BY: Pavane Navarathna

These Design Documents are prepared solely for the use by the party with whom the Design Professional has entered into a contract, and there are no representations of any kind made by the Design Professional to any party with whom the Design Professional has not entered into contract.



- NOTES:
- SHORT-TERM CLOSURE FOR WIDE LOAD TRANSPORT TO PIPELINE RIGHT-OF-WAY.
  - P-001 SIGNAGES TO BE INSTALLED THE PREVIOUS DAY.
  - PARKING ON EAST SIDE OF FAIRWAY STREET TO BE PROHIBITED DURING EQUIPMENT TRANSPORT, ADVANCED NOTICE WILL BE PROVIDED TO RESIDENTS.

**LEGEND:**

- SIGN MARKER
- FLEXIBLE DRUM
- TUBULAR MARKER
- ▨ BARRICADE
- ▨ WORK ZONE
- ⚡ AUTOMATED FLAGGER
- ⚡ ASSISTANCE DEVICE (AFAD)
- ▨ TCP CONTROL LOCATION

**PERMIT TO PRACTICE**  
WATT CONSULTING GROUP LTD

SIGNATURE \_\_\_\_\_

DATE \_\_\_\_\_

**PERMIT NUMBER: 1001432**  
ENGINEERS & GEOSCIENTISTS  
BRITISH COLUMBIA

SEAL:

REVISIONS	
0	ISSUED FOR IMPLEMENTATION 2023-07-27
1	ISSUED FOR IMPLEMENTATION 2023-08-02
2	
3	
4	
5	
6	
7	
8	

0 18.75m 37.5m 75m

1:1,500

DESIGNED: KM	DRAWN: KM	CHECKED: NK	APRVD: NK
DESIGN VEHICLE:		DESIGN SPEED: 50 km/h	
PROJECT NO: 3431.B01		DRAWING NO: S SUMAS-FAIRWAY_P2	
DATE: 2023-07-27		REVISION: 1	

TITLE: **TRAFFIC CONTROL LAYOUT**  
**S SUMAS RD/FAIRWAY ST - WIDE LOAD TRANSPORT**  
**BPLP TMEP SPREAD 6B**

Calgary, Edmonton, Lloydminster,  
Okanagan, Vancouver, Victoria  
WATTCONSULTINGGROUP.COM